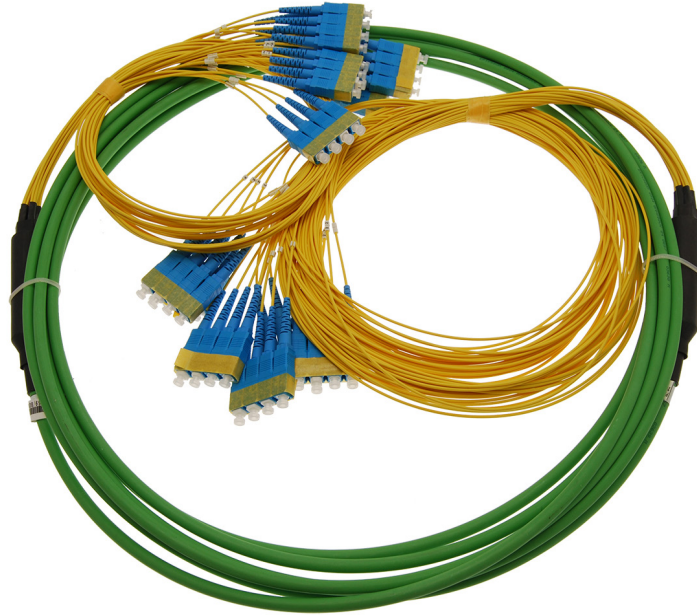


## Multifiber Cable Assembly, Indoor – RPM 253

### Multifiber Cable



### Features

- Extremely slim and compact design
- Small cable diameter, 6.3mm (24f) and 8.3mm (48f)
- 24 & 48 fibers
- Bend insensitive fiber G657A2
- High fiber packing density
- Quick and easy to install
- RoHS compliant

### Application

This multifiber patch cable enables class-leading packaging density for optical interconnect applications.

The assembly is intended for indoor interconnection between transmission equipment and patch panels or similar fixed routes.

The cable is delivered pre-terminated in both ends. Standard connector options are SC, LC - UPC and APC and the most common hybrid conversions between the different connector types.

The assembly is based on Hexatronic's well-proven micro cable technology. The fibers in the cable break out to individual patch cords. One end is 1.5 m in order to reach all ports within one rack frame. The other end is 0.7 m to minimize slack and over length at the opposite side to be directly connected to a patch panel or active ports.

The slim and robust assembly requires no extra protection and takes minimum space for example in overhead cable cuts. The assemblies are available in several fixed lengths and are easy to coil thanks to the bend insensitive G657A2 fiber.

The assembly is designed to withstand flame resistance in accordance with IEC 60332-3-24.



## Multifiber Cable Assembly, Indoor – RPM 253

### Typical Data

Temperature range

Operation .....-20 to +70°C

IEC61753-cat C

Bending radius

Cable .....≥ 140 mm

Patch .....≥ 30 mm

Dimensions

Cable diameter .....6.3 mm (24f), 8.3 mm (48f)

Patch diameter .....2.0 mm

Tolerances of assembly length (L=mm)

$L \leq 10000$  .....+100 / - 50 mm

$10000 < L \leq 30000$  .....+200 / - 100 mm

Optical performance of connectors

Insertion loss .....Max 0.30 dB

IEC 61300-3-4 method B

Return loss

APC (8°) Mated .....Min 60 dB

UPC .....Min 50 dB

Flame resistance in accordance with

IEC 60332-3-24

### Delivery Information

The assembly is delivered in single package individually coiled and fixed in plastic bags.

### Ordering Information

| PRODUCT NUMBER    | CONNECTORS    | SPLIT LENGTHS L1/L2 | 24 FIBERS / CABLE  |
|-------------------|---------------|---------------------|--------------------|
| RPM 253 0769/EFGH | SC - SC       | 1500/700            | 24xG657A2 GNHQBDUV |
| RPM 253 3069/EFGH | LC - LC       | 1500/700            | 24xG657A2 GNHQBDUV |
| RPM 253 3268/EFGH | LC/APC-LC/APC | 1500/700            | 24xG657A2 GNHQBDUV |
| RPM 253 3369/EFGH | LC/APC-SC/APC | 1500/700            | 24xG657A2 GNHQBDUV |
| RPM 253 3968/EFGH | SC/APC-LC     | 1500/700            | 24xG657A2 GNHQBDUV |
| RPM 253 3768/EFGH | SC/APC-SC     | 1500/700            | 24xG657A2 GNHQBDUV |
| RPM 253 3170/EFGH | SC - LC       | 1500/700            | 24xG657A2 GNHQBDUV |

| PRODUCT NUMBER   | CONNECTORS    | SPLIT LENGTHS L1/L2 | 48 FIBERS / CABLE  |
|------------------|---------------|---------------------|--------------------|
| RPM 253 509/EFGH | SC - SC       | 1500/700            | 48xG657A2 GNHQBDUV |
| RPM 253 519/EFGH | LC - LC       | 1500/700            | 48xG657A2 GNHQBDUV |
| RPM 253 507/EFGH | LC/APC-SC/APC | 1500/700            | 48xG657A2 GNHQBDUV |
| RPM 253 506/EFGH | SC/APC-LC     | 1500/700            | 48xG657A2 GNHQBDUV |
| RPM 253 508/EFGH | SC - LC       | 1500/700            | 48xG657A2 GNHQBDUV |

/EFGH = Length designation (total length of cable)

L < 10 m            in mm (8 m = /8000)

L ≥ 10 m           in m (20 m = /20M)

Standard lengths are (8), 10, 15, 20, 30 m